

IN STOCK
NOW

Tarasafe Standard

High performance vinyl safety flooring for heavy traffic contract applications



Compact sheet

R10

Slip Resistant

HSE 36+

Slip Resistant

20

Rtm/Rz

Roughness



Heavy traffic

T

Wear group

SparClean®

Treated



Easy to cut

SAFETY FLOORING

A sustainable choice



100% recyclable
29% recycled content

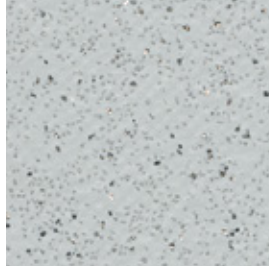


REACH

REACH compliant

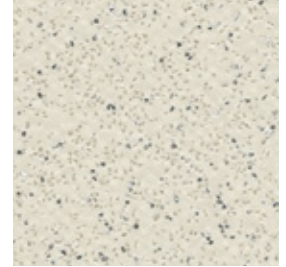


VOC < 100 µg/m³



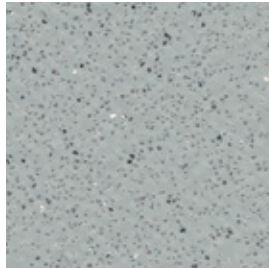
7731 Marbre

NCS: 2002-B / LRV: 51.2



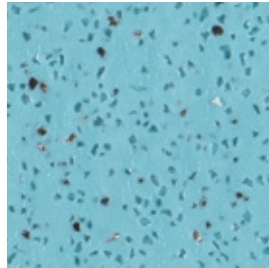
7618 Edelweiss

NCS: 1505-Y10R / LRV: 57.9



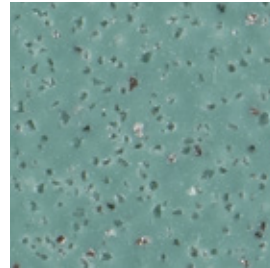
7767 Dove Grey

NCS: 3502-G / LRV: 34.1



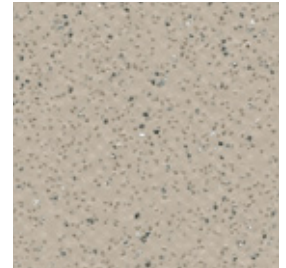
6245 Atoll

NCS: 2030-B10G / LRV: 41.1



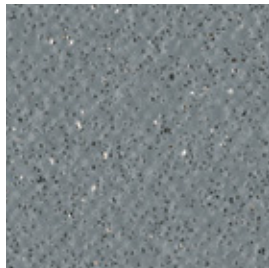
6589 Leaf

NCS: 4020-B90G / LRV: 25.0



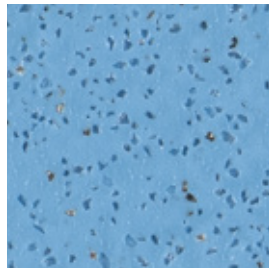
7386 Savana

NCS: 2005-Y50R / LRV: 44.3



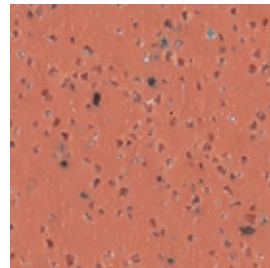
7773 Storm

NCS: 5502-B / LRV: 21.3



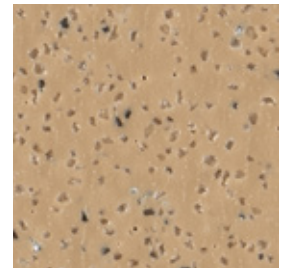
2430 Rain Drop

NCS: 2040-R90B / LRV: 32.5



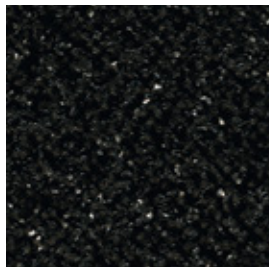
8102 Paprika

NCS: 3040-Y80R / LRV: 21.9



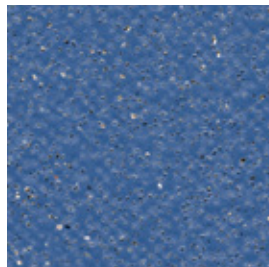
7315 Jute

NCS: 3020-Y40R / LRV: 30.8



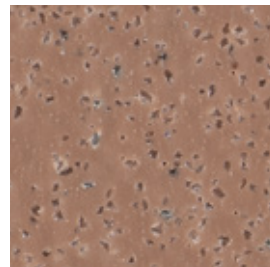
7801 Noir

NCS: 9000-N / LRV: 5.7



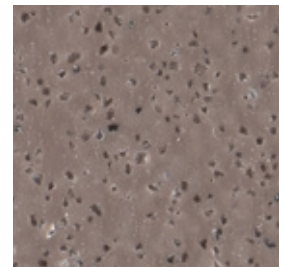
7709 Royal Blue

NCS: 4040-R80B / LRV: 15.3



6084 Badian

NCS: 4020-Y70R / LRV: 20.9



6085 Grizzly

NCS: 6005-Y80R / LRV: 19.2



Scan here
for matching
WELD RODS

NCS: Natural Colour System
LRV: Light Reflectance Value

Gerflor®

Tarasafe Standard

gerflor.com / follow us   



Z0014319

Tarasafe Standard is a hardwearing safety flooring collection that comprises of a PVC wear layer and deeply inlaid mineral crystal particles (patented). It is suitable for heavy traffic areas and is ideal for hardworking contract applications.

It delivers Safety in Numbers, with a PTV >36+ slip resistance (Dry & Wet), a R10 wet slip resistance rating and >20 Rtm/Rz surface roughness in accordance with HSE guidelines.

The revolutionary SparClean® surface treatment improves the product performance in terms of stain resistance and durability.

It contains 29% recycled content.





Anti bacterial activity against MRSA of 99% after 24h00.



A popular choice in the education, healthcare, leisure, hospitality & housing markets. Easy to clean and maintain.

Tarasafe Standard

Description			
Total thickness	EN ISO 24346	mm	2.0
Thickness of wearlayer	EN ISO 24340	mm	0.85
Weight	EN ISO 23997	g/m ²	2360
Width/Length of sheet	EN ISO 24341	cm/ml	200/20
Classification			
Norm/Product specification	-	-	EN ISO 10582
European classification	EN ISO 10874	class	34-43
Fire rating	EN 13501-1	class	Bfl-s1
Static electrical propensity	EN 1815	kV	≤ 2
Slip resistance: Pendulum Test (dry & wet)	EN 16165:2021 – Appendix C (BS 7976-2)	PTV	> 36
Surface roughness	-	µm	Rz ≥ 20
Slip resistance wet: Ramp test with oil	EN 16165:2021 – Appendix B (DIN 51130)	class	R10
Slip resistance wet: Ramp test with water	EN 16165:2021 – Appendix A (DIN 51097)	class	B
Slip resistance : Ramp test	EN 13845 (annex C)	class	ESf / ESb
Performances			
Wear resistance	EN 660.2	mm ³	≤2
Wear Group	-	group	T
Type Binder content	EN ISO 10582	type	I
Dimensional stability	EN ISO 23999	%	≤ 0.40
Residual indentation (norm)	EN ISO 24343-1	mm	≤ 0.10
Residual indentation (average measure)	-	mm	≤ 0.05
Castor chair test (type W)	ISO 4918	-	OK
Thermal conductivity	EN ISO 10456	W/(m.K)	0.25
Colour fastness	EN ISO 105-B02	degree	≥ 6
Surface treatment	-	-	SparClean®
Chemical products resistance	EN ISO 26987	-	OK
Anti-bacterial activity (MRSA) ⁽¹⁾	ISO 22196	-	> 99% inhibits growth
Environment / indoor air quality			
TVOC after 28 days	ISO 16000-6	µg/m ³	< 100
Certification	-	-	Floorscore®
CE marking			
	EN 14041		

(1) The implementation of an effective cleaning method is the best defence against infection.

Uniclass Pr_35_57_71_61
CI / Sfb
(43) n6

UK reference








Installation and Maintenance Guidelines, as well as complementary ranges available on our Gerflor website.



IMPORTANT: The information contained in this document is valid from 01/07/2026 and is subject to change at any time without notice. In the context of constantly changing technology, our customers are responsible, prior to any use, for checking with us that this document is the version in force. Rubber leaves indelible stains on vinyl floorings: do not use mats with rubber backing and replace tubular furniture feet with those made of PVC or polyamide. Place mats of sufficient length at entrances to reduce outside sources of dirt.

We care / we act our commitments for 2030

 <p>climate</p> <p>-30% CO₂ scopes 1, 2, 3 in tons eq. CO₂, vs 2019 Science Based Targets⁽¹⁾</p>	 <p>resources</p> <p>75% biobased, mineral and recycled content⁽²⁾</p> <p>30% recycled content⁽³⁾</p>	 <p>circularity</p> <p>65 000 tons annual volume recycled⁽⁴⁾</p> <p>45% looseley⁽⁵⁾</p>	 <p>health & well-being</p> <p>100% products better than Indoor Air Quality standards⁽⁶⁾</p> <p>95% sales covered by EPD⁽⁷⁾</p>	 <p>people</p> <p>30% women⁽⁸⁾</p> <p>40% internal mobility⁽⁹⁾</p> <p>Towards 0 accident⁽¹⁰⁾</p>
--	---	---	---	--

More details: 1. Scopes 1, 2 & 3, in absolute value, market-based. Trajectory approved by SBTi (Science Based Targets Initiative). 2. Origin of raw materials for the entire Floor & Wall portfolio, on average, by weight; including 15% virgin salt, a primary element in vinyl manufacturing. Compared to 71% in 2024. 3. Average content in the Floor & Wall vinyl portfolio, by weight. Compared to 21% in 2024. 4. Recycled in our factories and recycling units. Compared to 59 040 tons in 2024. 5. % of Floor activity with non-glued products, easy to remove, easy to re-use. Compared to 40% in 2024. 6. 100% of vinyl and linoleum sold to the building market below 100 micrograms/m³ (TVOC 28 days). 7. % of Floor & Wall activity covered by Environmental Product Declarations (EPD). Compared to 44% in 2024. 8. % women in our global workforce and among our managers. Compared to respectively 26% and 27% in 2024. 9. % job openings filled with internal hires worldwide. Compared to 25% in 2024. 10. Towards 0 accident: Lost time accident per million hours worked: below 3 vs 8,9 in 2024, for Gerflor employees worldwide.



Non-contractual photos and color rendering, including AI-generated visuals - RC Lyon B 726 580 152 - ipe - 07/2026 - Z0014319 - Indicative documentation cost: 1.30 €